



# ULTRA-TREAD®

## ULTIMATE SEAMLESS FLOOR TOPPING

Daily productivity means hard abuse on any facility's floor. In addition to foot and vehicular traffic, floors also deteriorate quickly due to repeated chemical abuse, wet environments, and drastic temperature changes, which put you and your assets at risk. The solution: Ultra-Tread. The fast, effective flooring system from Tnemec Company's **StrataShield™** family of products.

A polyurethane modified concrete floor topping, Ultra-Tread is designed for fast installation and quick return-to-service, limiting costly downtime. It's an ideal flooring solution for USDA- and FDA-regulated facilities, and offers excellent resistance to thermal shock, chemicals, and the high-alkalinity usually associated with moisture vapor transmission (MVT).

A versatile and self-priming floor topping that withstands hot liquids and aggressive cleanings, Ultra-Tread is ideally suited to meet conditions in food and beverage processing plants, meat and poultry plants, pharmaceutical manufacturing, paper facilities, commercial/industrial kitchens, or anywhere a durable floor topping is required.

## FEATURES AND BENEFITS

- Quick return-to-service
- Resistant to thermal shock\*
- Chemical resistant
- Seamless and easy to clean
- Suitable for USDA & FDA regulated facilities
- Low odor for use near occupied spaces
- Tolerates high moisture vapor transmission (MVT)

*\*Series N242 and N244 mortars applied at 1/4" or greater system thickness*

Available in four distinct versions, as well as a glaze coat, there is an Ultra-Tread product for all your flooring needs.

**Products and Colors** 

## THE PRODUCTS

### SERIES N241 ULTRA-TREAD MVT\*

A slurry-applied base layer designed to reduce moisture vapor emissions prior to the application of non-breathing, polymer floor topping finishes. Series N241 is installed and broadcasted to refusal with aggregate, decorative colored quartz, or decorative flake to produce a nominal system thickness of 1/8" or greater. A variety of clear or pigmented topcoats may be applied to seal the system.

### SERIES N242 ULTRA-TREAD S\*

A versatile slurry-applied mortar, Series N242 is typically installed at a nominal thickness of 1/8" to 1/4". This product can be applied as a stand-alone flooring system, or aggregate, decorative colored quartz, or decorative flake can be broadcast into it to modify its texture or appearance. A variety of clear or pigmented topcoats may be applied to seal the system.

### SERIES N243 ULTRA-TREAD V\*

A trowelable mortar for vertical surfaces such as trenches, equipment pads and cove base. Series N243 provides a seamless floor to wall transition. This product is used in conjunction with Series N242 Ultra-Tread S or Series N244 Ultra-Tread M and provides a smooth surface finish.

### SERIES N244 ULTRA-TREAD M\*

A trowelable mortar with high early strength, Series N244 is typically used to resurface floors degraded by physical or chemical attack. This product provides a slightly textured finish and is typically installed as a stand-alone system with a nominal 1/4" to 3/8" thickness.

### SERIES N246 ULTRA-TREAD GLAZE

A pigmented, high-build, low odor, polyurethane coating. Typically used as a topcoat for sealing or locking aggregate in Series N242 Ultra-Tread S or Series N244 Ultra-Tread M broadcast texture finishes.

\*Self-priming and can be applied to 10-day-old concrete.

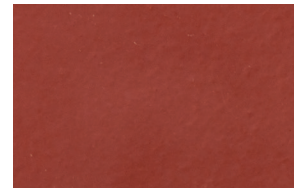
## STANDARD COLORS

Colors represented are photographic representations of actual standards and are intended for reference purposes only. These representations should not be used to finalize color selection(s). Please contact your local Tnemec coatings consultant for color accurate samples.

**Note:** Ultra-Tread utilizes aromatic chemistry which can amber or darken with age or exposure to UV light.



Gray



Red



Off-White\*\*



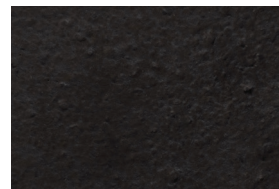
Beige\*\*



Blue\*\*



Green\*\*



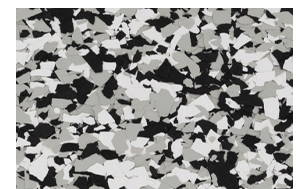
Black\*\*



Safety Yellow\*\*



Broadcast Quartz\*\*\*



Broadcast Flake\*\*\*

\*\*Additional lead time may apply.

\*\*\*Series N241 Ultra-Tread MVT and N242 Ultra-Tread S can also be broadcast with colored quartz or flake for a decorative appearance and then coated with a clear chemical resistant sealer. A second quartz or flake broadcast may be required to achieve uniform color and texture. For standard quartz and flake blend options, see the StrataShield Decorative Quartz or Decorative Flake color cards.

Published technical data, instructions and pricing are subject to change without notice. Contact your Tnemec technical representative for current technical data, instructions and pricing. Warranty information: The service life of Tnemec's coatings will vary. For warranty, limitation of seller's liability and product information, please refer to Tnemec Product Data Sheets at [tnemec.com](http://tnemec.com) or contact your Tnemec technical representative. © Tnemec Company, Inc. 2024 FLYUT